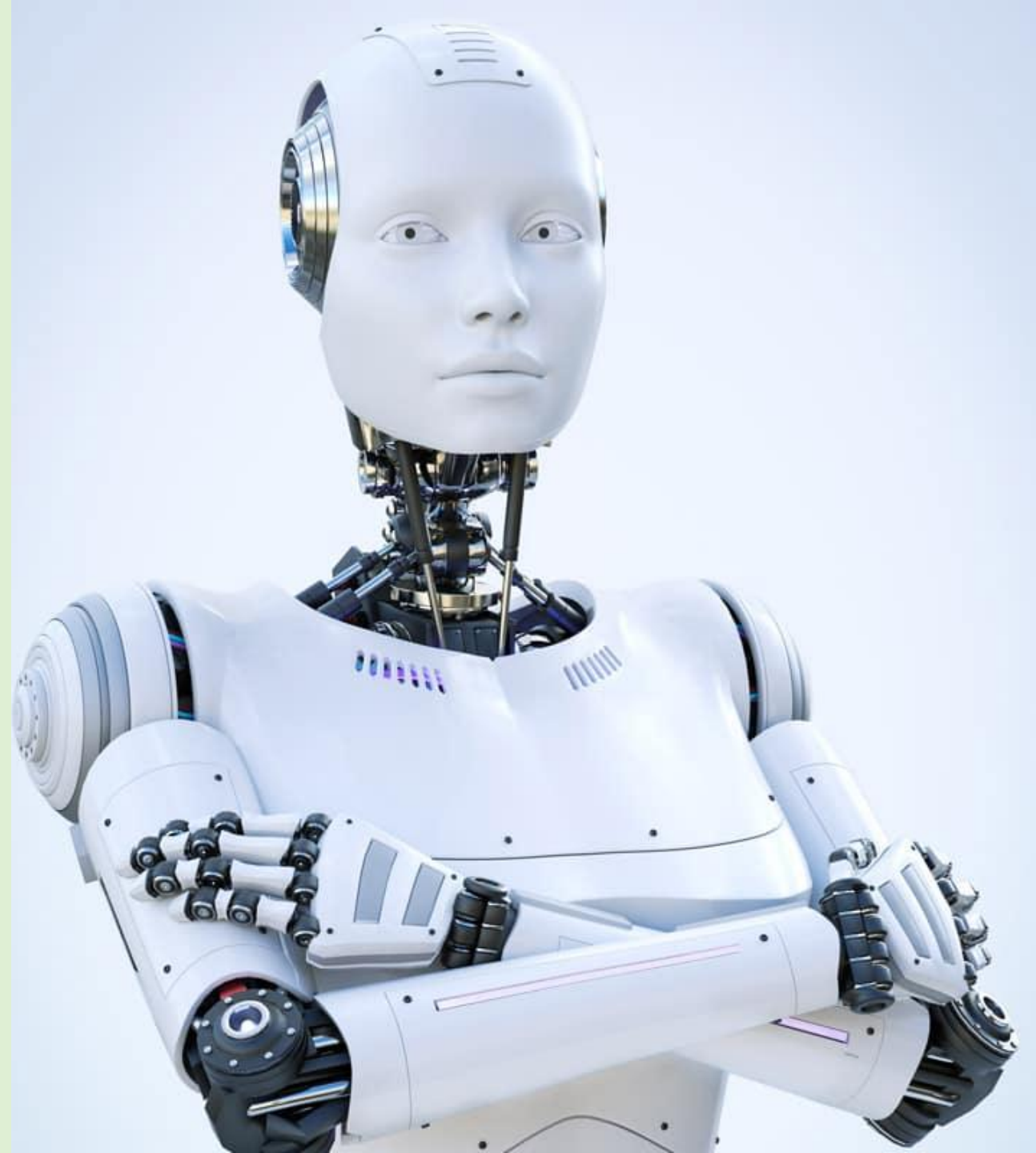


March 2024

Open Data - Open Tech Local innovation

Christer Solheim Gundersen



Norwegian strategies and OpenEPI

Norway to double climate finance to NOK 14 billion

Press release | No: 1/2021 | Date: 01/11/2021

Norad's strategy towards 2030

3. Contribute to a greener world

4. Be a champion of innovation within development cooperation

EAF-Nansen Programme



- Home
- About the Programme
- News & Stories
- Calendar
- Publications & Multimedia
- Areas of work
- Surveys
- Data Access Requests



Large numbers of Humpback whales observed off the southern Mozambique Coast
 Observations by scientists Carlos Bento and Almeida Guissamulo from the research vessel Dr. Fridtjof Nansen

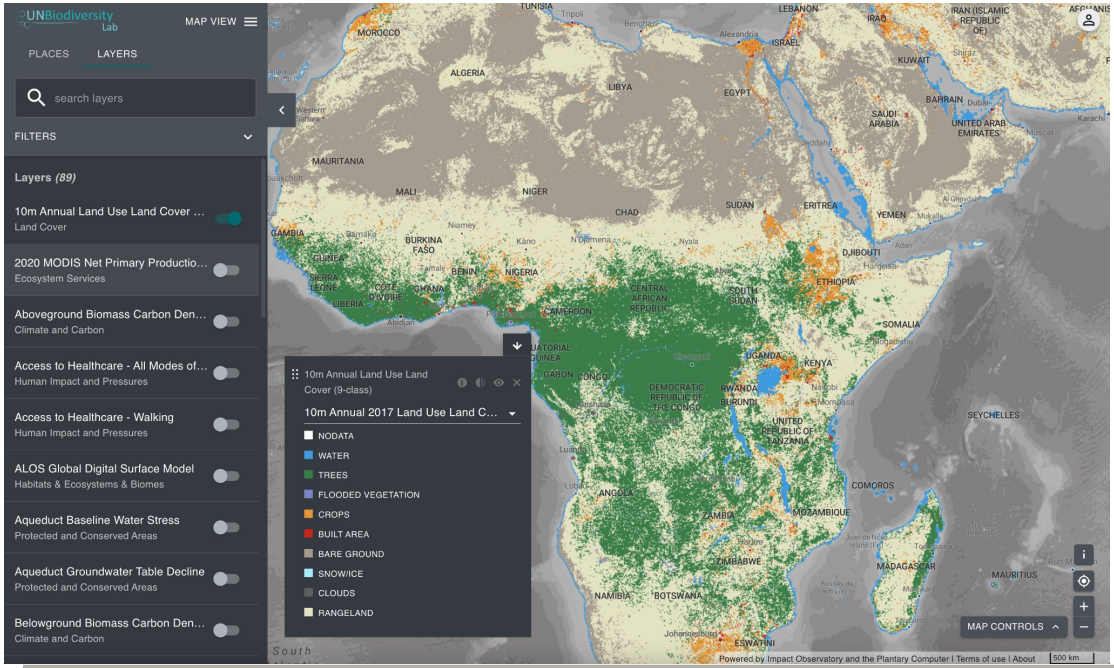
In collaboration with 32 countries across Africa and the Bay of Bengal, the EAF-Nansen Programme is [Subscribe to our](#)



All Eyes on COP27

Key Outcomes from the COP27 Climate Summit

- Insights **What Is "Loss and Damage" from Climate Change? 6 Key Questions, Answered**
- Insights **Closing the Emissions Gap: A Climate Action Roadmap for Limiting Warming to 1.5 Degrees C**



FOREST 500 A PROJECT OF **Global Canopy**

Rankings Data & Methods Insights Publications About [Q](#)

Nine years of ranking the most influential companies driving tropical deforestation

500 companies and financial institutions have the power to transform cattle, timber, soy, and palm oil supply chains. But are they doing enough to eliminate deforestation and human rights abuses? See our latest assessments to find out.

[Discover the 2023 annual report →](#)

Global nature targets hinge on eliminating deforestation. Progress





Every year, humans continue to expand into large areas of tropical forests. [The IPBES report](#) published in 2019 noted that 100 million hectares of tropical forest has been lost in the years from 1980 to 2000. This is equivalent to tropical forest loss three times the size of Germany.

Drivers of Deforestation

Tropical forests have been and are still being converted to other land uses on a large scale worldwide. The main reasons are governance failures and the use of forest areas for agricultural lands and pastures.



What drives deforestation is a complex mix of many different actors and underlying causes:



Q Search

☰ Menu

My locations

	Thursday	Friday	Saturday	Sunday
Oslo ☆	18°	16°	15°	17°
Hamar ☆	17°	14°	13°	15°
Accra ☆	28°	28°	26°	29°
Paris ☆	17°	17°	18°	19°
English ☆	28°	30°	28°	26°

Map

Weather warnings

Water temperatures

Mountain passes

Other services from The Norwegian Meteorological Institute

[Subjective forecast chart](#)

[Text forecast for Norway](#)

[Satellite images](#)



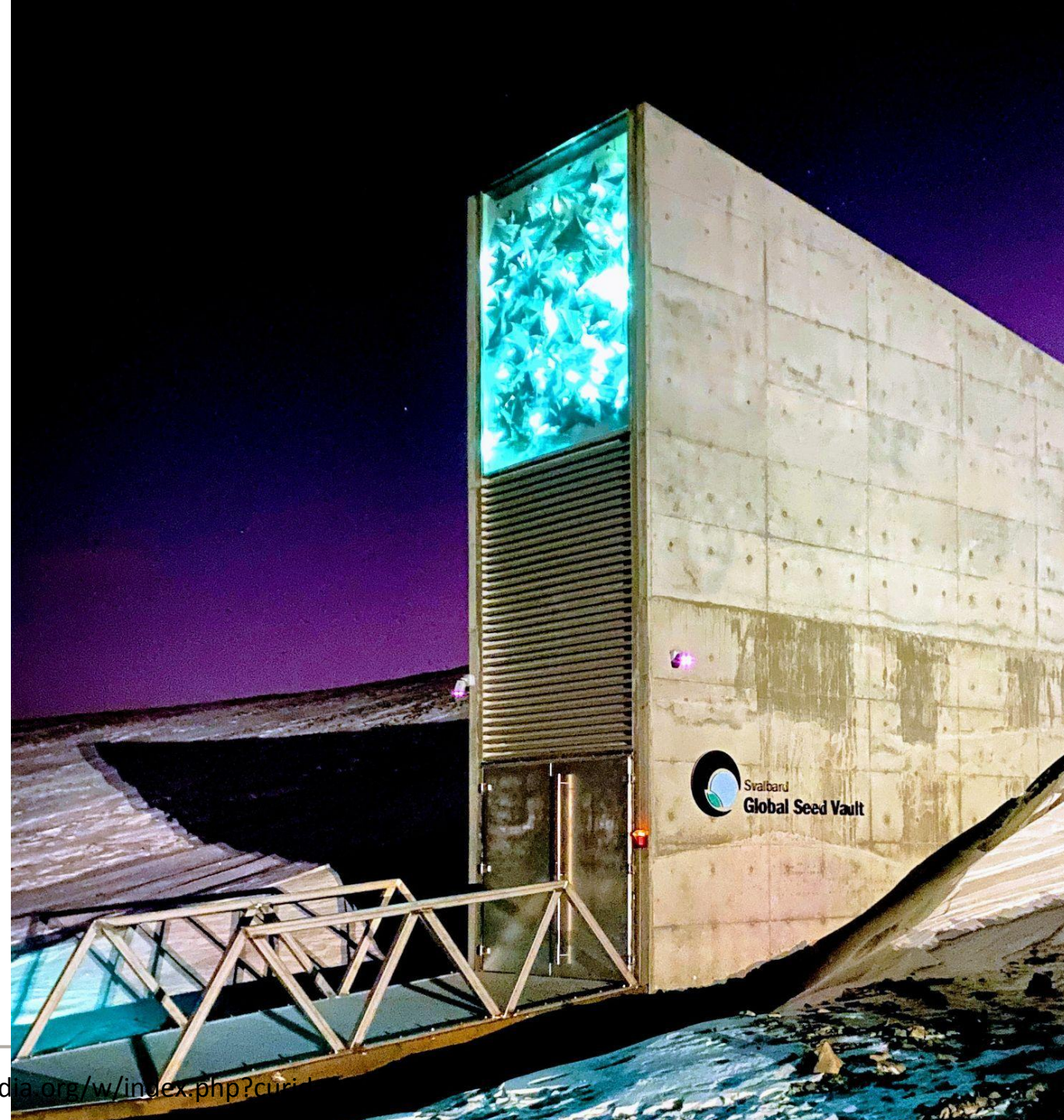
Norad Open Policy for Climate, Nature, Ocean and Food security



Challenges?



No long term plans for storage and archive of selected high value datasets



An aerial photograph of terraced rice fields on a hillside. The fields are arranged in curved, concentric patterns, showing a gradient of green and yellow. A small wooden structure with a white roof is visible on one of the terraces. In the lower right, three people are walking along a path. The text "very few platforms have a 'clean' open implementation" is overlaid in white on the left side of the image.

very few platforms have a
“clean” open
implementation

Vendor lock-in kills open data



Organizational lock-in kills open data





No scalable way to support existing bedrock of the open movement that we are all depending on....

A photograph of a waterfall cascading over moss-covered rocks into a pool of water. The scene is lush and green, with dense foliage on the right side. The text "massive risk of duplication of efforts and investments" is overlaid in white on the left side of the image.

massive risk of duplication
of efforts and investments

A vast landscape of rolling green hills under a bright sky, with a small herd of sheep grazing on a hillside in the distance.

long road from
datasets to
meaningful product

No real way to support the open source developer community in our collaborating countries



A young evergreen tree sapling with vibrant green needles stands prominently in the center of the frame. It is surrounded by a thick carpet of moss and other forest floor vegetation. The background is a soft-focus forest with more trees and foliage, creating a sense of depth and a natural, serene atmosphere. The lighting is soft and diffused, highlighting the textures of the needles and the moss.

Global digital infrastructure
investments

drive local innovation



OpenEPI focus

- projects with **higher quality**
- projects with **lower risk**
- **shorter implementation** runways
- **more local involvement** and innovation

Open Earth Platform Initiative

Help governments, NGOs and private sector working to solve climate related issues and maximize their impact

through open data, open source technologies and open AI

Two main focus avenues

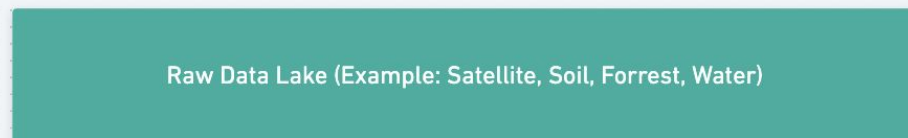
Long term Global Data Vault Storage and archive of High Value Data



Product implementation



Aggregated data sets and services



Not one platform - a platform of
interoperable platforms

Local innovation?

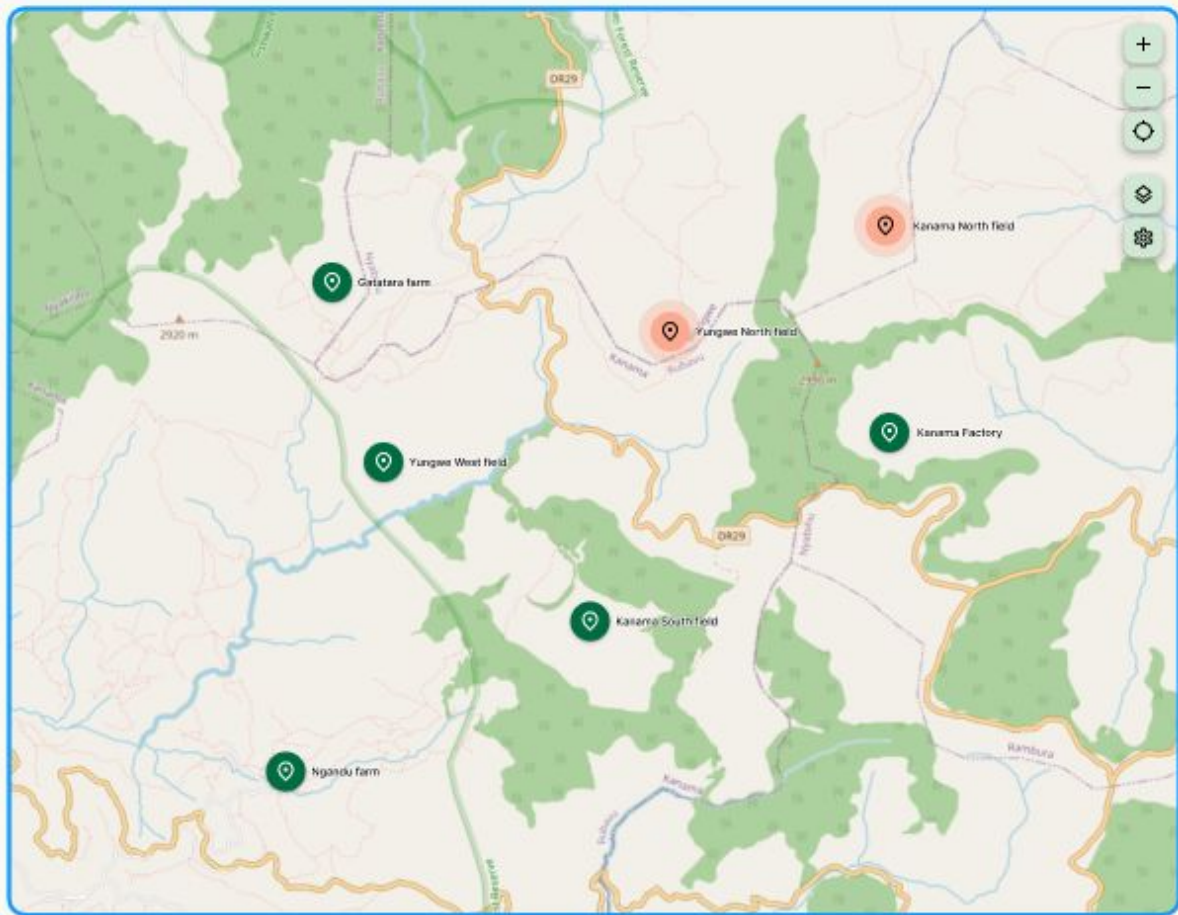


Open Policy

Third party
perspective



▲ C-level warning +



Weather in Nyabihu

Current Hour by hour Long term

Weather	Temp.	Percip.	Wind
	29°	0.0 mm	4 m/s

- ▲ Yungwe North field**
Maize
- Yungwe West field
Maize, Beans
- Ngandu farm
Plantain
- Gatatara farm
Tea
- Kanama South field
Tea
- ▲ Kanama North field**
Tea
- Kanama Factory
Industrial
- Uwimana North farm
Cattle
- Uwimana South farm
Cattle

Third party perspective

Dashboard-Warning

ClimaSafe

Menu

C-level warning +

Weather in Nyabihu

Current Hour by hour Long term

Weather Temp. Precip. Wind
29° 0.0 mm 4 m/s

- Yungwe North field Maize
- Yungwe West field Maize, Beans
- Ngandu farm Plantain
- Gatatare farm Tea
- Kanama South field Tea
- Kanama North field Tea**
- Kanama Factory Industrial
- Uwimana North farm Cattle
- Uwimana South farm Cattle

GLOBAL FOREST WATCH

MAP DASHBOARD HELP ABOUT BLOG OTHER TOOLS

LEGEND ANALYSIS

- Tree cover gain - 2000-2020
- Tree cover gain
- Tree cover loss - 2001-2022
- Tree cover loss
- Tree cover - 2010
- Tree cover

Planet Satellite Imagery (TROPICS)

AQUEDUCT WATER RISK ATLAS

BASELINE FUTURE

Temporal resolution: Annual Monthly

Indicators

- OVERALL WATER RISK
- PHYSICAL RISKS QUANTITY
 - Water Stress
 - Water Depletion
 - Interannual Variability
 - Seasonal Variability
 - Groundwater Table Decline
 - Riverine flood risk
 - Coastal flood risk
 - Drought Risk
- PHYSICAL RISKS QUALITY
 - Untreated Connected Wastewater
 - Coastal Eutrophication Potential

UN9iversity Lab

PLACES LAYERS

search layers

Filters

- Layers (89)
- 10m Annual Land Use Land Cover
- 2020 MODIS Net Primary Production
- Aboground Biomass Carbon Den...
- Access to Healthcare - All Modes of...
- Access to Healthcare - Walking
- ALOS Global Digital Surface Model
- Aqueduct Baseline Water Stress
- Aqueduct Groundwater Table Decline
- Belowground Biomass Carbon Den...

4R

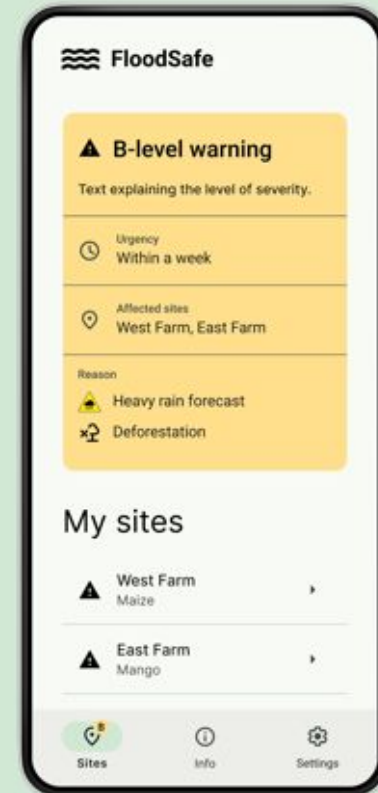
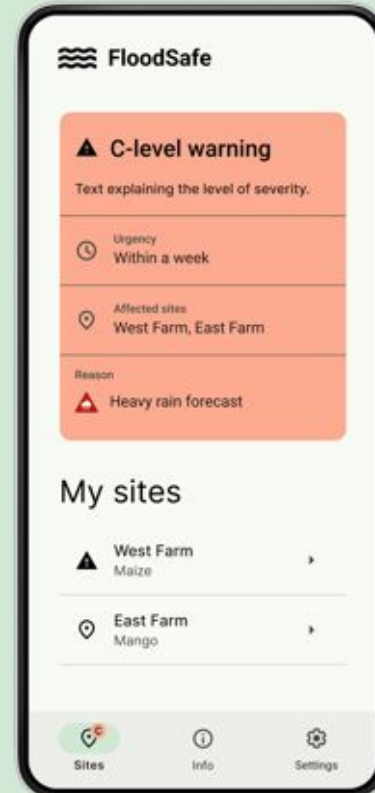
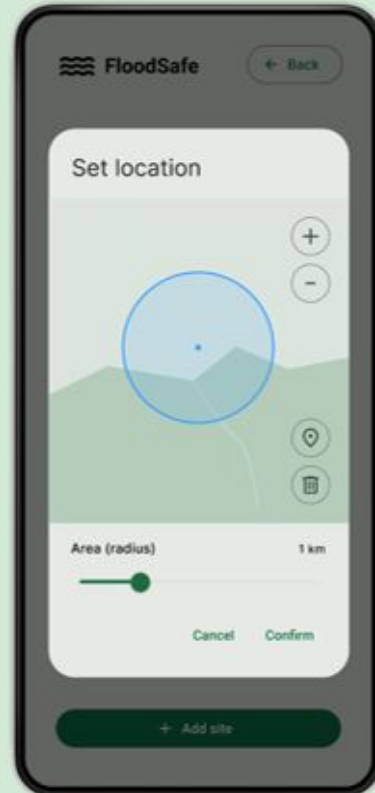
My locations

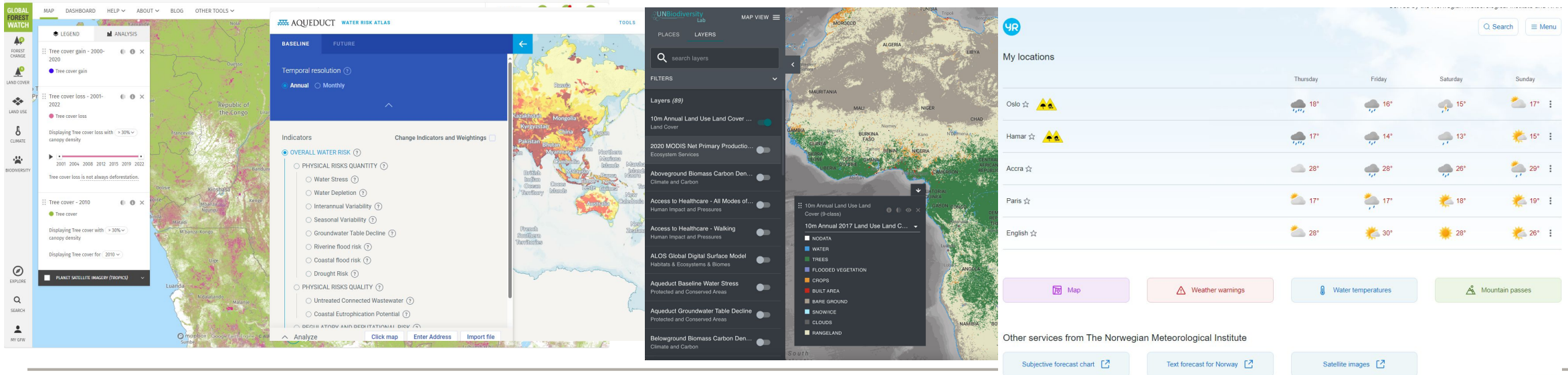
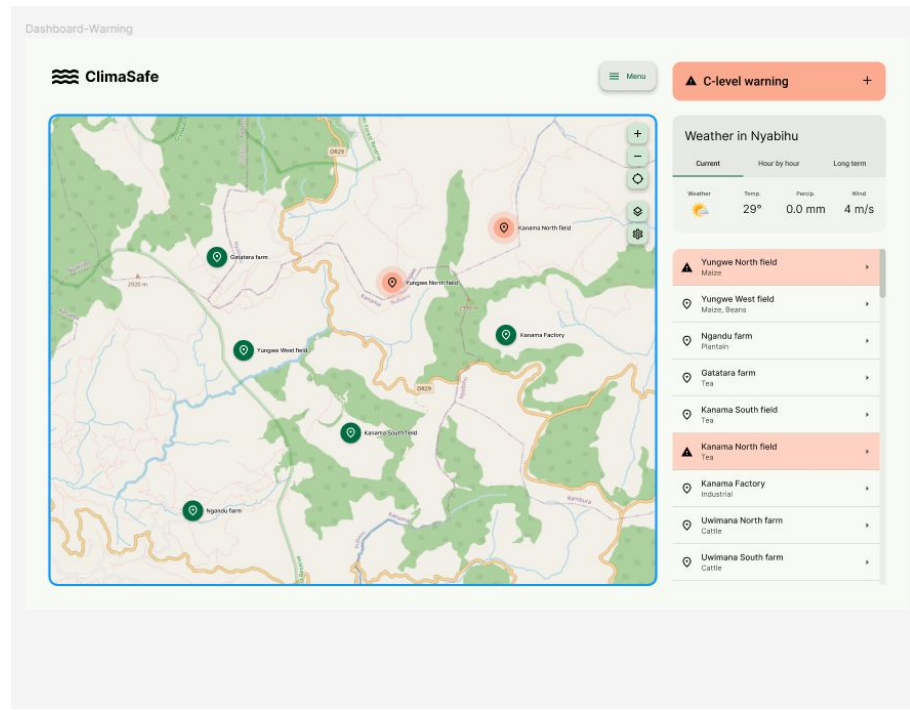
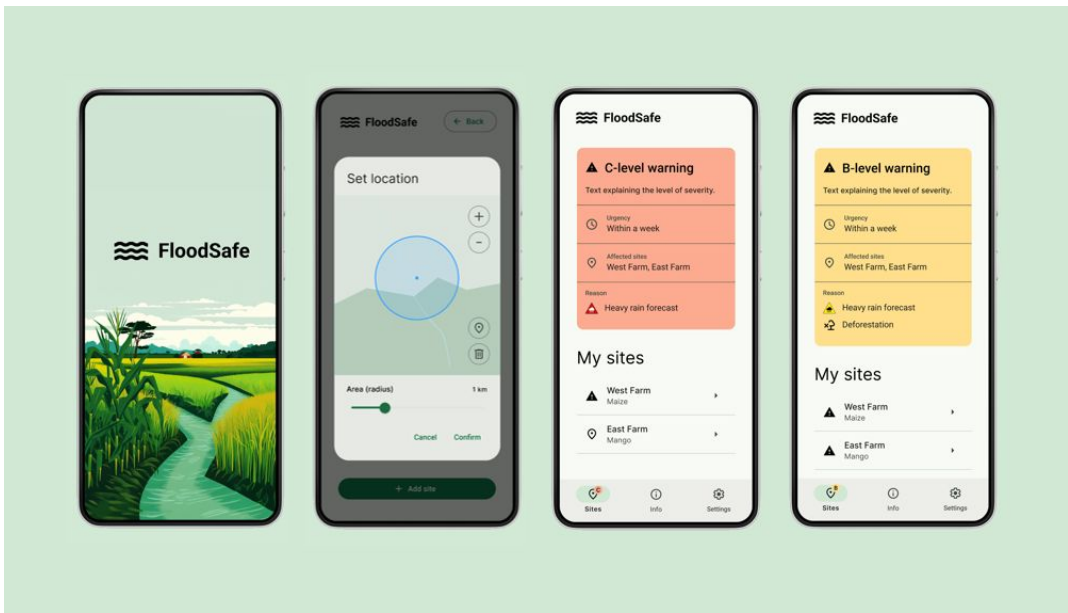
	Thursday	Friday	Saturday	Sunday
Oslo ☆ ☠️ ☠️	☁️ 18°	☁️ 16°	☁️ 15°	☁️ 17°
Hamar ☆ ☠️ ☠️	☁️ 17°	☁️ 14°	☁️ 13°	☁️ 15°
Accra ☆	☁️ 28°	☁️ 28°	☁️ 26°	☁️ 29°
Paris ☆	☁️ 17°	☁️ 17°	☁️ 18°	☁️ 19°
English ☆	☁️ 28°	☁️ 30°	☁️ 28°	☁️ 26°

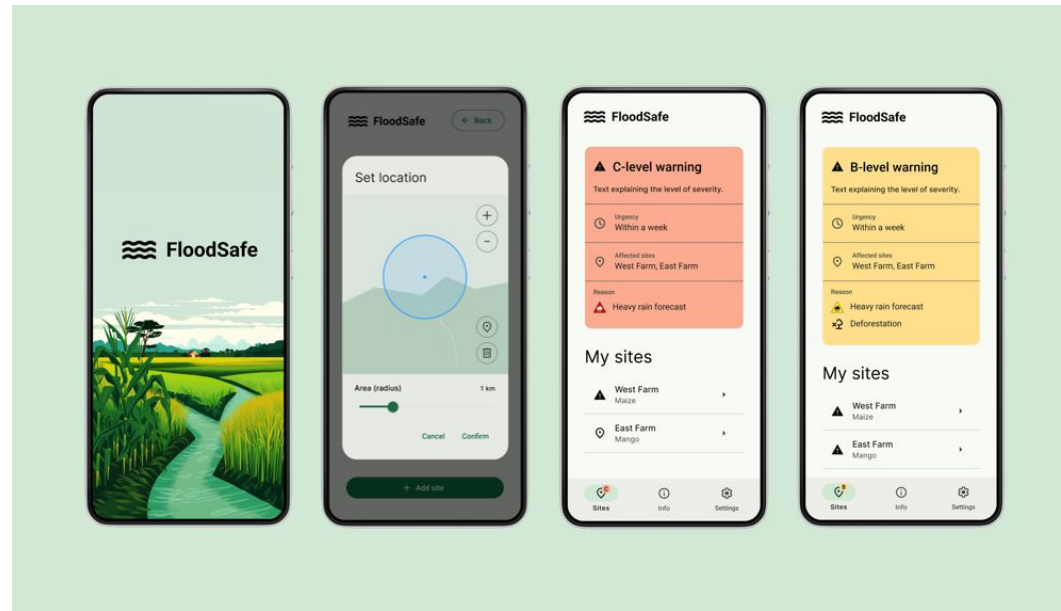
Map Weather warnings Water temperatures Mountain passes

Other services from The Norwegian Meteorological Institute

- Subjective forecast chart
- Text forecast for Norway
- Satellite images







GLOBAL FOREST WATCH

MAP DASHBOARD HELP ABOUT BLOG OTHER TOOLS

LEGEND ANALYSIS

- Tree cover gain - 2000-2020
- Tree cover loss - 2001-2022
- Tree cover - 2010

AQUEDUCT WATER RISK ATLAS

BASELINE FUTURE

Temporal resolution: Annual Monthly

Indicators

- OVERALL WATER RISK
- PHYSICAL RISKS QUANTITY
 - Water Stress
 - Water Depletion
 - Interannual Variability
 - Seasonal Variability
 - Groundwater Table Decline
 - Riverine flood risk
 - Coastal flood risk
 - Drought Risk
- PHYSICAL RISKS QUALITY
 - Untreated Connected Wastewater
 - Coastal Eutrophication Potential

UN9 BioView

PLACES

FILTERS

Layers (89)

- 10m Annual Land Cover
- 2020 MODIS NPP
- Aqueduct Baseline Water Stress
- Aqueduct Groundwater Table Decline
- Belowground Biomass Carbon Density

Dashboard - Warning

ClimaSafe

Map showing various locations with markers.

Weather in Nyabihu

Current	Hour by hour	Long term
29°	0.0 mm	4 m/s

- Yungwe North Field
- Yungwe West Field
- Ngandu Farm
- Gakatare farm
- Kyamba South Field
- Kyamba North Field
- Kyamba Factory
- Uwimana North Farm
- Uwimana South Farm

Weather forecast for Nyabihu:

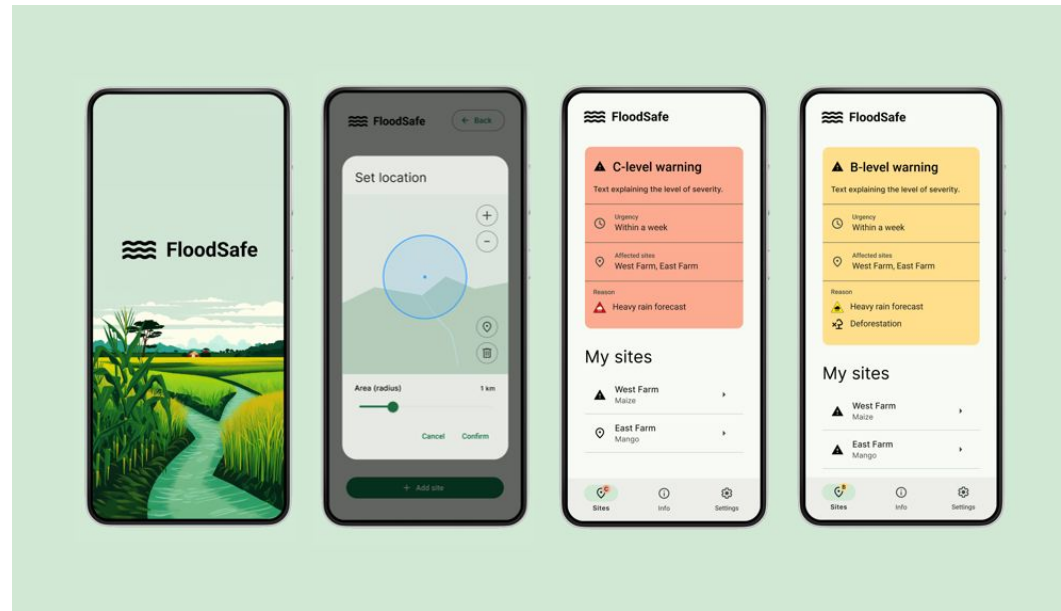
Thursday	Friday	Saturday	Sunday
18°	16°	15°	17°
17°	14°	13°	15°
28°	28°	26°	29°
17°	17°	18°	19°
28°	30°	28°	26°

Other services from The Norwegian Meteorological Institute

- Map
- Weather warnings
- Water temperatures
- Mountain passes

Other services from The Norwegian Meteorological Institute

- Subjective forecast chart
- Text forecast for Norway
- Satellite images



GLOBAL FOREST WATCH

MAP DASHBOARD HELP ABOUT BLOG OTHER TOOLS

LEGEND ANALYSIS

- Tree cover gain - 2000-2020
- Tree cover loss - 2001-2022
- Tree cover - 2010

AQUEDUCT WATER RISK ATLAS

BASELINE FUTURE

Temporal resolution: Annual Monthly

Indicators

- OVERALL WATER RISK
- PHYSICAL RISKS QUANTITY
 - Water Stress
 - Water Depletion
 - Interannual Variability
 - Seasonal Variability
 - Groundwater Table Decline
 - Riverine flood risk
 - Coastal flood risk
 - Drought Risk
- PHYSICAL RISKS QUALITY
 - Untreated Connected Wastewater
 - Coastal Eutrophication Potential

UN9 Biodiversity

PLACES

FILTERS

Layers (89)

2020 MODIS N Ecosystem Services

Access to Health Human Impact as

Access to Health Human Impact as

ALOS Global Digital Surface Model Habitats & Ecosystems & Biomes

Aqueduct Baseline Water Stress Protected and Conserved Areas

Aqueduct Groundwater Table Decline Protected and Conserved Areas

Belowground Biomass Carbon Den... Climate and Carbon

WATER TREES FLOODED VEGETATION CROPS BUILT AREA BARE GROUND SNOWICE CLOUDS RANGELAND

Dashboard - Warning

ClimaSafe

Menu C-level warning +

Weather in Nyabihu

Current: 29° 0.0 mm 4 m/s

- Yungwe North Field
- Yungwe West Field
- Ngandu Farm
- Gakwara farm
- Kwamba South Field
- Kwamba North Field
- Kwamba Factory
- Uwimana North Farm
- Uwimana South Farm

Search Menu

	Thursday	Friday	Saturday	Sunday
1	☁️ 18°	☁️ 16°	☁️ 15°	☀️ 17°
2	☁️ 17°	☁️ 14°	☁️ 13°	☀️ 15°
3	☁️ 28°	☁️ 28°	☁️ 26°	☀️ 29°
4	☀️ 17°	☁️ 17°	☀️ 18°	☀️ 19°
5	☀️ 28°	☀️ 30°	☀️ 28°	☀️ 26°

Map Weather warnings Water temperatures Mountain passes

Other services from The Norwegian Meteorological Institute

Subjective forecast chart Text forecast for Norway Satellite images

Data catalog of open data

We currently have 5 APIs available.



Weather →

This section provides access to real-time weather data.



Flood →

This section provides access to real-time flood forecasts.



Geocoding →

This section provides geocoding and address lookup services.



Deforestation →

This section provides data on deforestation and environmental conservation efforts.



Soil →

This section provides precise soil data on a global scale.

Client libraries

We provide two client libraries to make use of our data easier.

Javascript →

A javascript client for accessing data from OpenEPI.

Python →

A python client for accessing data from OpenEPI.



Search

Menu

My locations

	Thursday	Friday	Saturday	Sunday
Oslo ☆	18°	16°	15°	17°
Hamar ☆	17°	14°	13°	15°
Accra ☆	28°	28°	26°	29°
Paris ☆	17°	17°	18°	19°
English ☆	28°	30°	28°	26°

Map

Weather warnings

Water temperatures

Mountain passes

Other services from The Norwegian Meteorological Institute

[Subjective forecast chart](#)

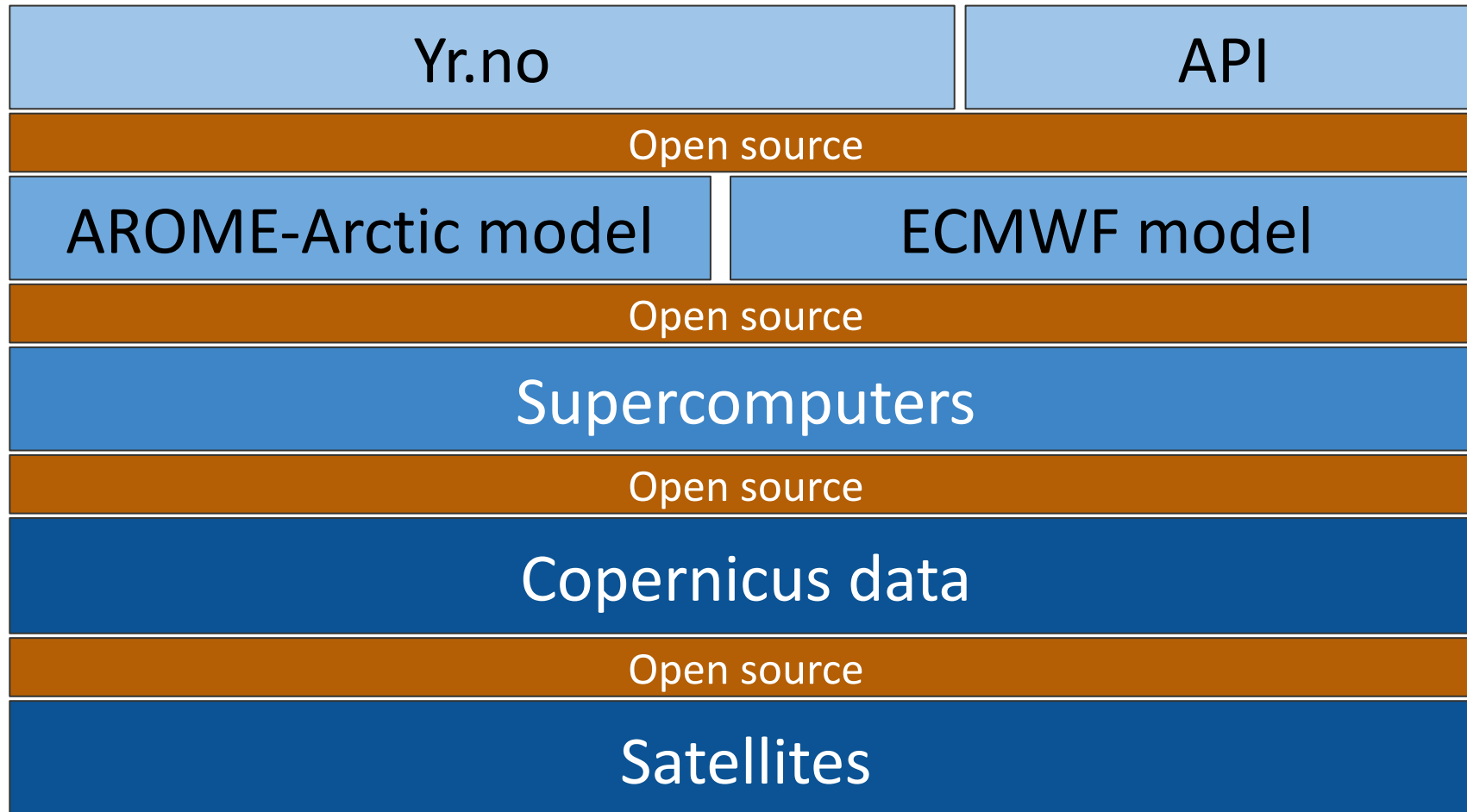
[Text forecast for Norway](#)

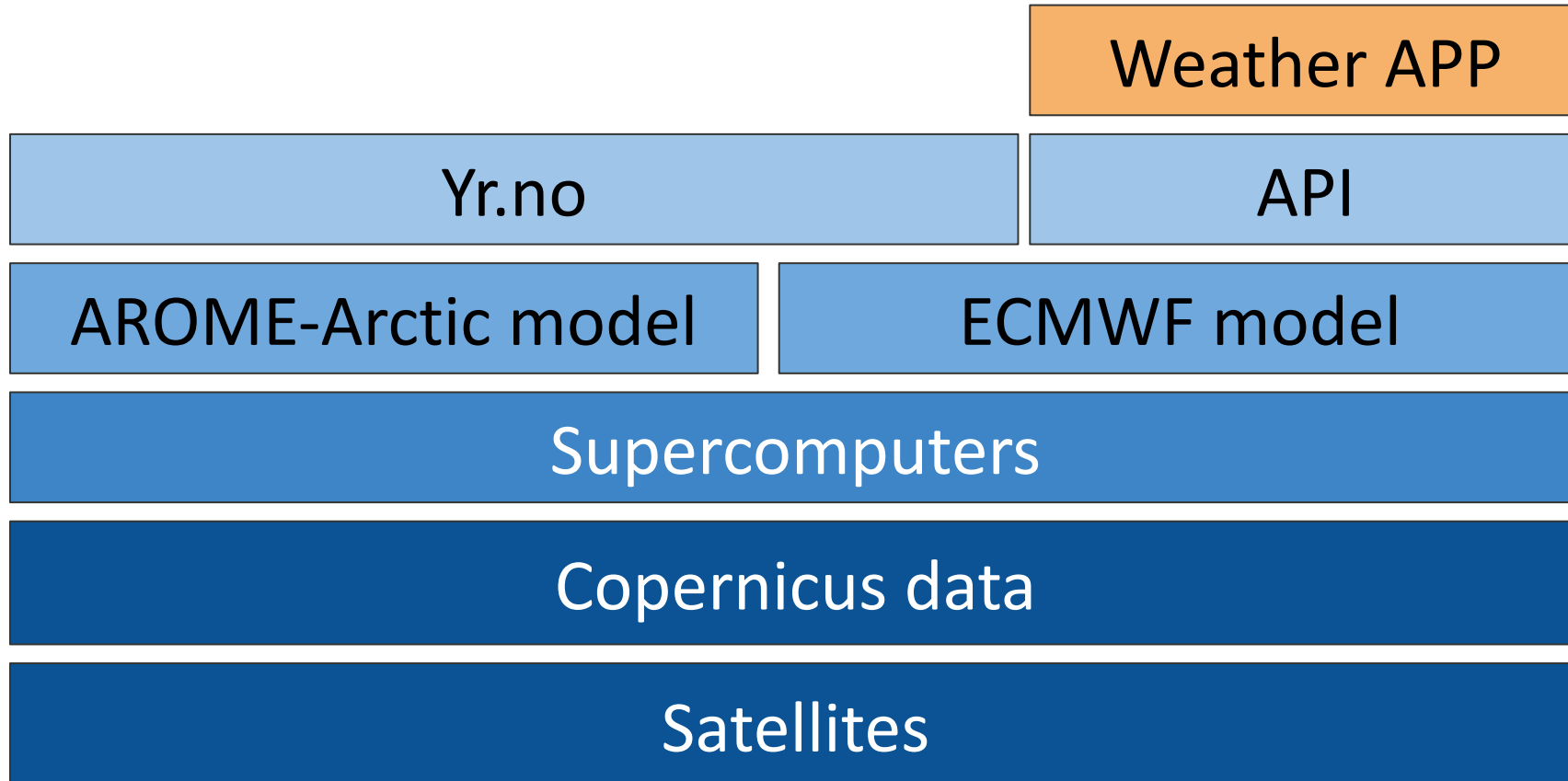
[Satellite images](#)











Check the weather

Find your spot...



Accra, Ghana

Lat: -0.187 Lon: 5.6037

21.09.2023 13:00

28.3 °C

Wind from: 188.7 degrees
Wind Speed: 5.6 m/s
Humidity: 74.2%
0 mm next 6 Hours.



21.09.2023 14:00

27.9 °C

Wind from: 192.5 degrees
Wind Speed: 5.9 m/s
Humidity: 77.3%
0 mm next 6 Hours.



21.09.2023 15:00

27.5 °C

Wind from: 198.7 degrees
Wind Speed: 6.3 m/s
Humidity: 78.6%
0 mm next 6 Hours.



21.09.2023 16:00



My locations

	Thursday	Friday
Oslo ☆	18°	16°
Hamar ☆	17°	14°
Accra ☆	28°	28°
Paris ☆	17°	17°
English ☆	28°	30°

Map

Weather warnings

Water temperatures

Other services from The Norwegian Meteorological Institute

[Subjective forecast chart](#)

[Text forecast for Norway](#)

[Satellite images](#)

Check the weather

Find your spot...



Accra, Ghana

Lat: -0.187 Lon: 5.6037

21.09.2023 13:00

28.3 °C

Wind from: 188.7 degrees
Wind Speed: 5.6 m/s
Humidity: 74.2%
0 mm next 6 Hours.



21.09.2023 14:00

27.9 °C

Wind from: 192.5 degrees
Wind Speed: 5.9 m/s
Humidity: 77.3%
0 mm next 6 Hours.



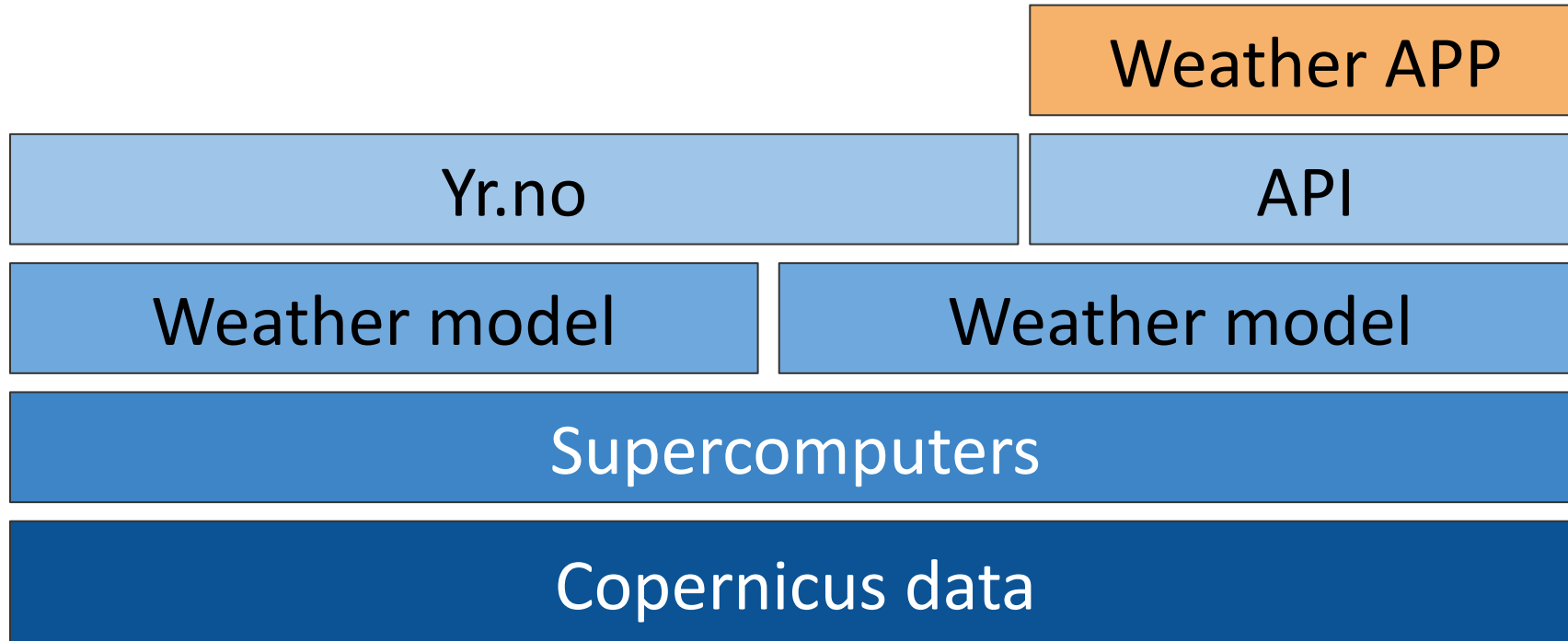
21.09.2023 15:00

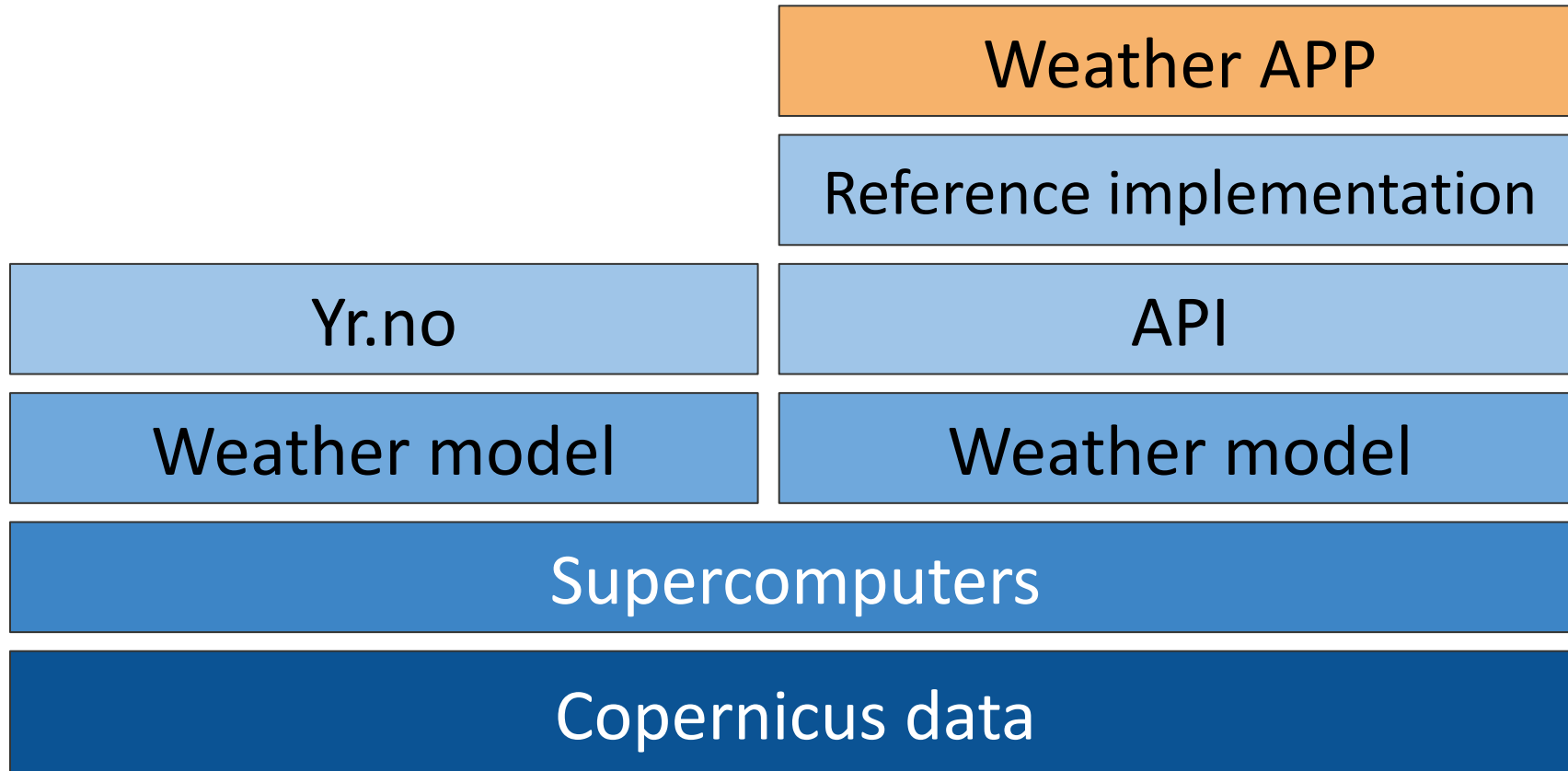
27.5 °C

Wind from: 198.7 degrees
Wind Speed: 6.3 m/s
Humidity: 78.6%
0 mm next 6 Hours.



21.09.2023 16:00





generated from [OER-Dev/weather-app-template](#)

main 1 branch 0 tags

Go to file Add file Code Use this template

	christer-io Update README.md	64ef1cf 9 hours ago	🕒 2 commits
📁	app	Initial commit	3 weeks ago
📁	components	Initial commit	3 weeks ago
📁	public	Initial commit	3 weeks ago
📄	.gitignore	Initial commit	3 weeks ago
📄	README.md	Update README.md	9 hours ago
📄	next.config.js	Initial commit	3 weeks ago
📄	package-lock.json	Initial commit	3 weeks ago
📄	package.json	Initial commit	3 weeks ago
📄	postcss.config.js	Initial commit	3 weeks ago
📄	tailwind.config.ts	Initial commit	3 weeks ago
📄	tsconfig.json	Initial commit	3 weeks ago

☰ README.md

Ab
No c
prov
📖 I
📄
☆
👁
🔗
Rele
No re
[Creat](#)
Pacl
No pe
[Publis](#)
Lang

<https://github.com/christer-io/yr-look-alike>

Runway?
- 2-5 minutes



Open Policy

Re-use of data
many possible
use cases

Sector
agnostic





March 2024

Thank you for your attention!

Christer Solheim Gundersen

